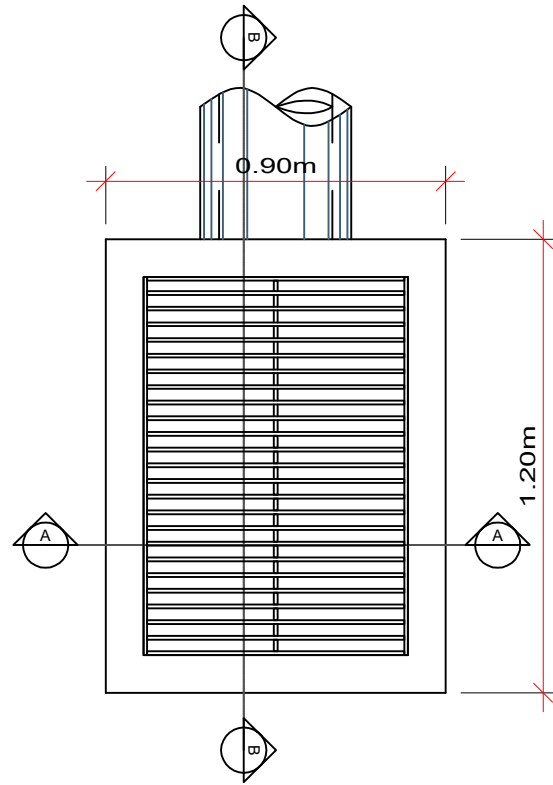
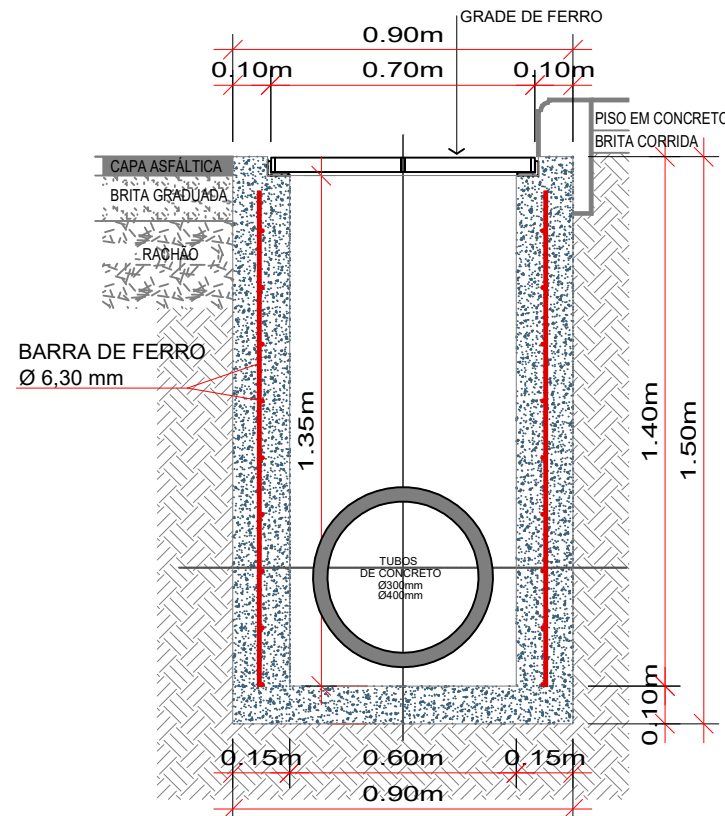


BOCA DE LOBO - TIPO I - Ø300mm/Ø400mm



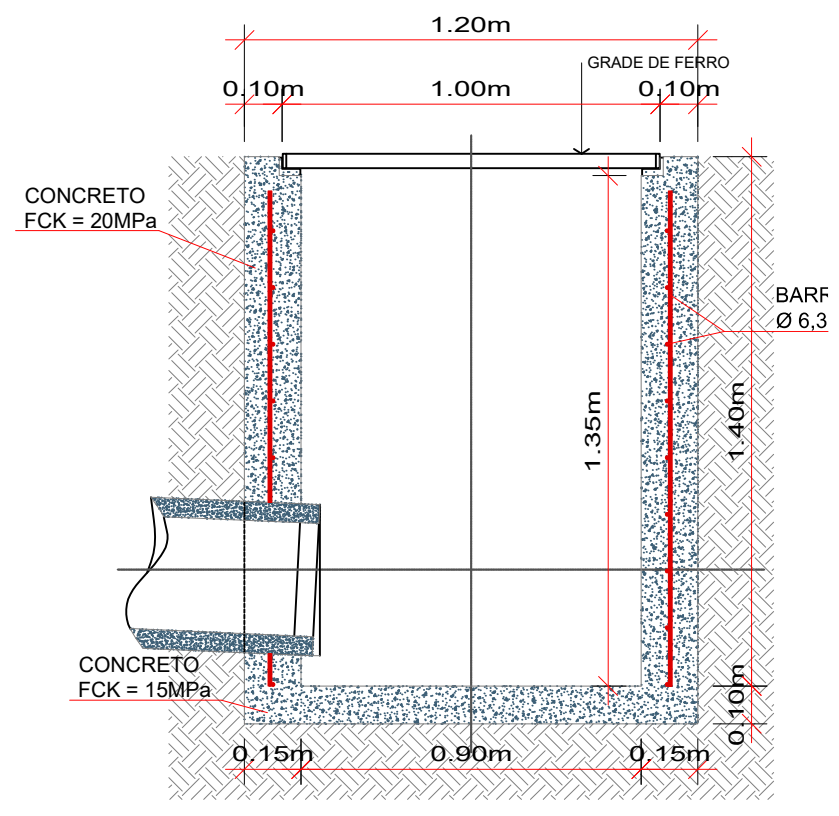
PLANTA BAIXA

Escala 1/20



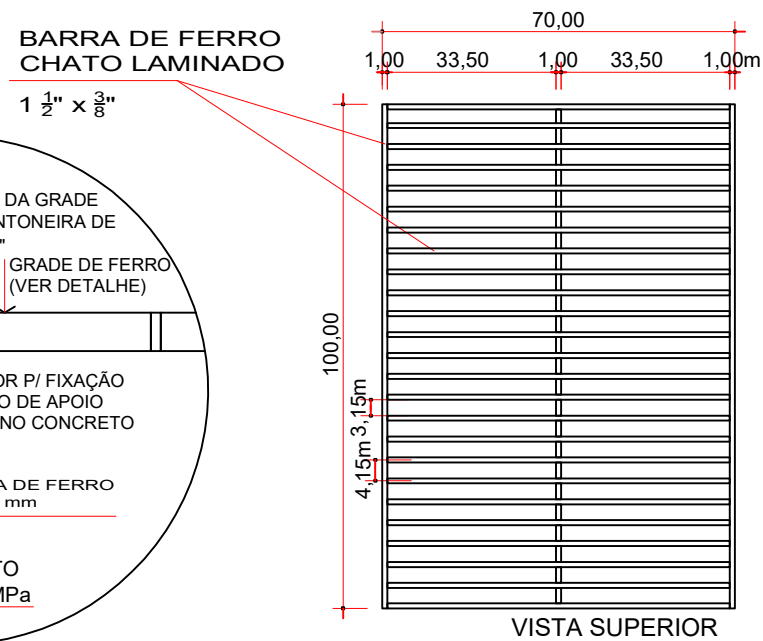
CORTE AA

Escala 1/20



CORTE BB

Escala 1/20

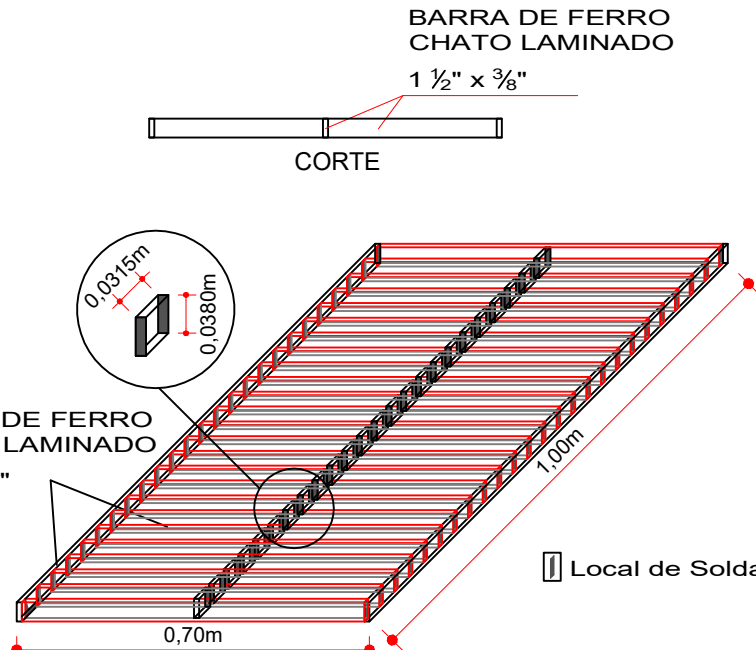


DETALHE APOIO DA GRADE

Escala 1/15

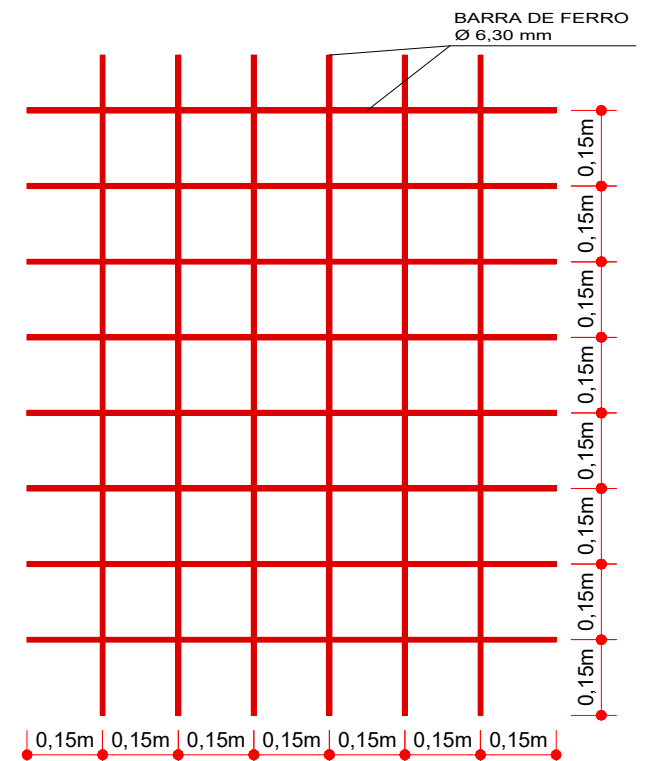
DETALHE DA GRADE

Escala 1/15



PERSPECTIVA DA GRADE

Escala 1/15



DETALHE DA ARMADURA

Escala 1/15



Projeto: PROJETO DE DRENAGEM

Trecho: OPP - 5+0,00

ENGENHEIRO RESPONSÁVEL

Projeto: DENIR NARCIZO ZULIAN - ENG. CIVIL - CREA/SC 50.805-8
MICHEL ALBERTI - ENG. CIVIL - CREA/SC 80.032-6
MAX MOOSHAMMER - ENG. CIVIL - CREA/SC 139.164-0
ANA JÚLIA UNGERICH - ENG. CIVIL-CREA/SC 105.295-8

Prancha:

**DRE.
03/04**

PREFEITO MUNICIPAL

Desenho: LUCAS F. BALESTRIN

Data: JUNHO DE 2019

Revisão:

Escala: 1/500