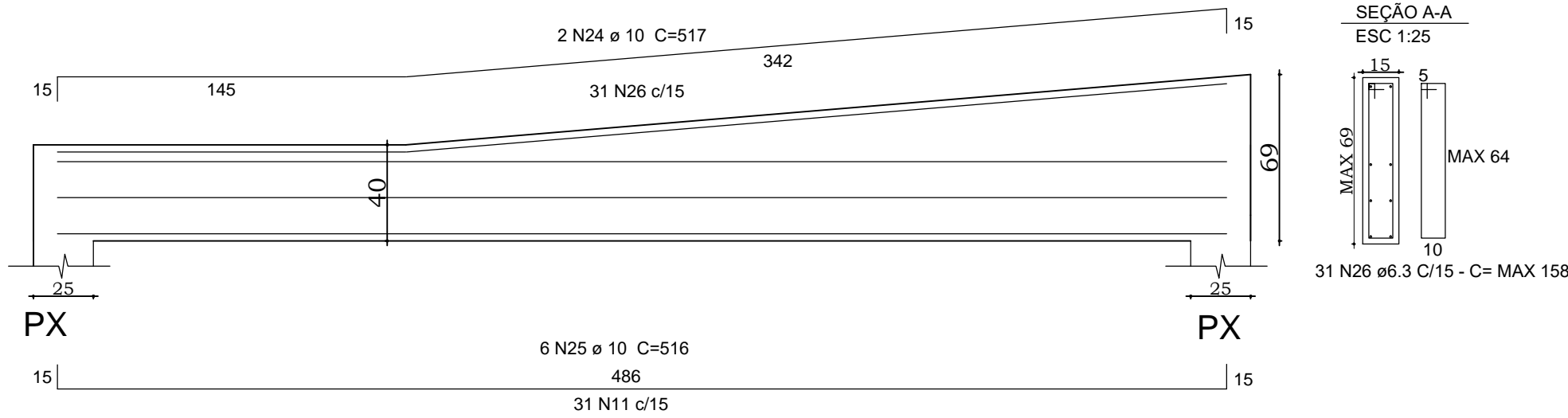
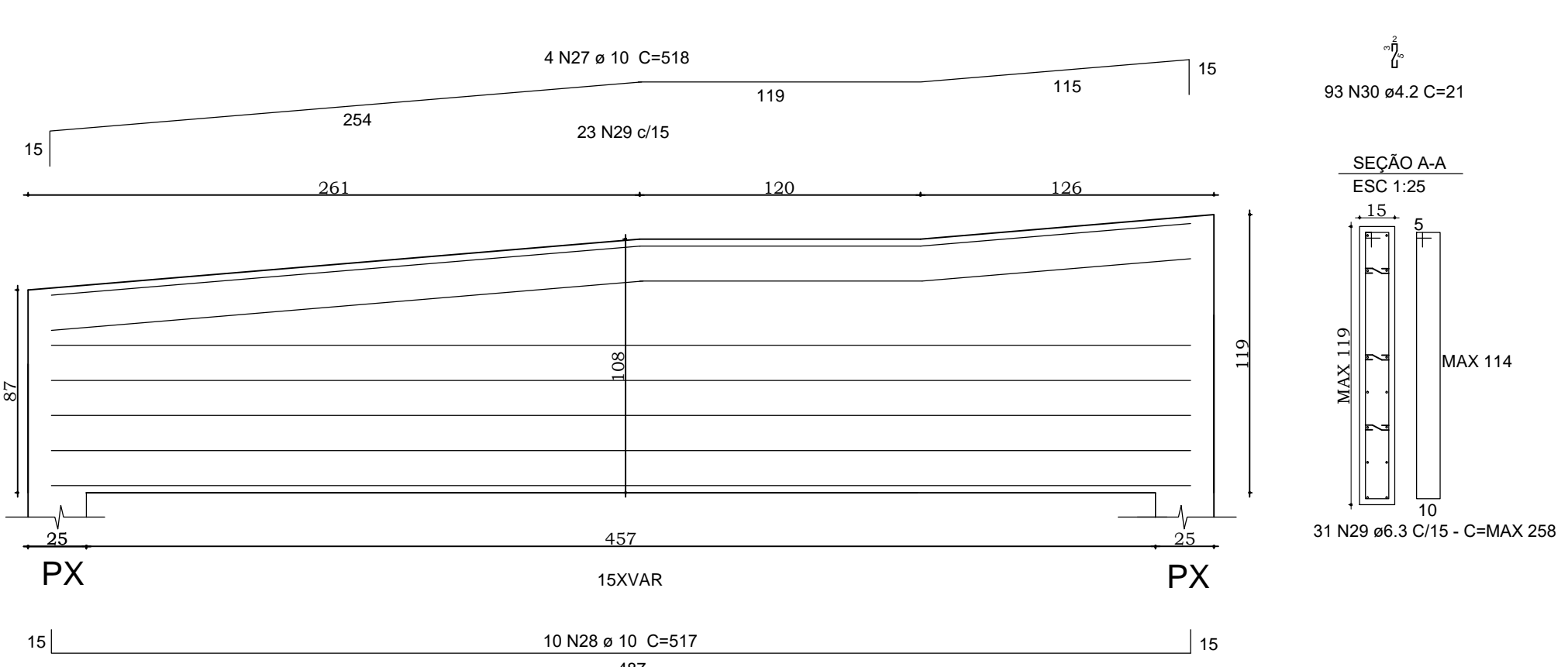


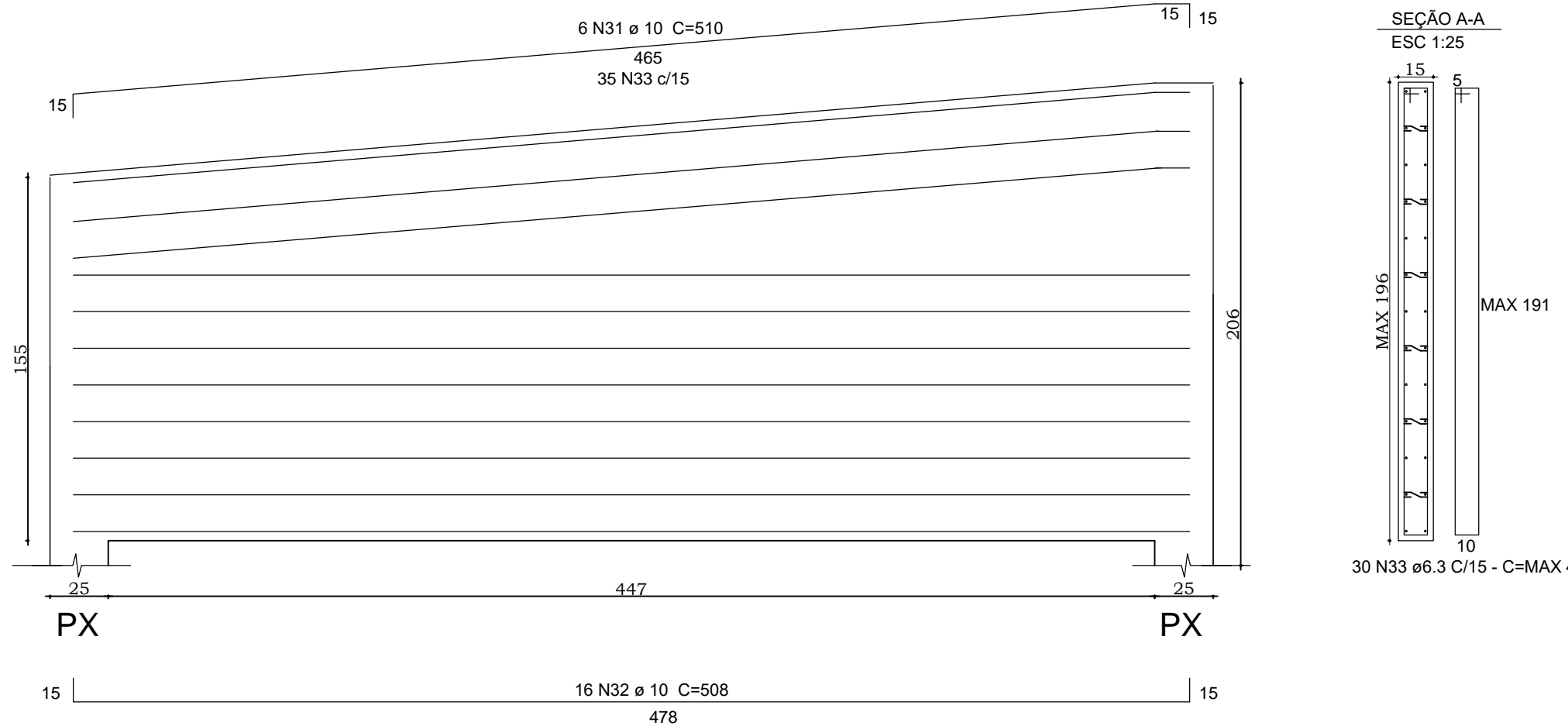
VIGAS RAMPA
V01=V04
ESC 1:25



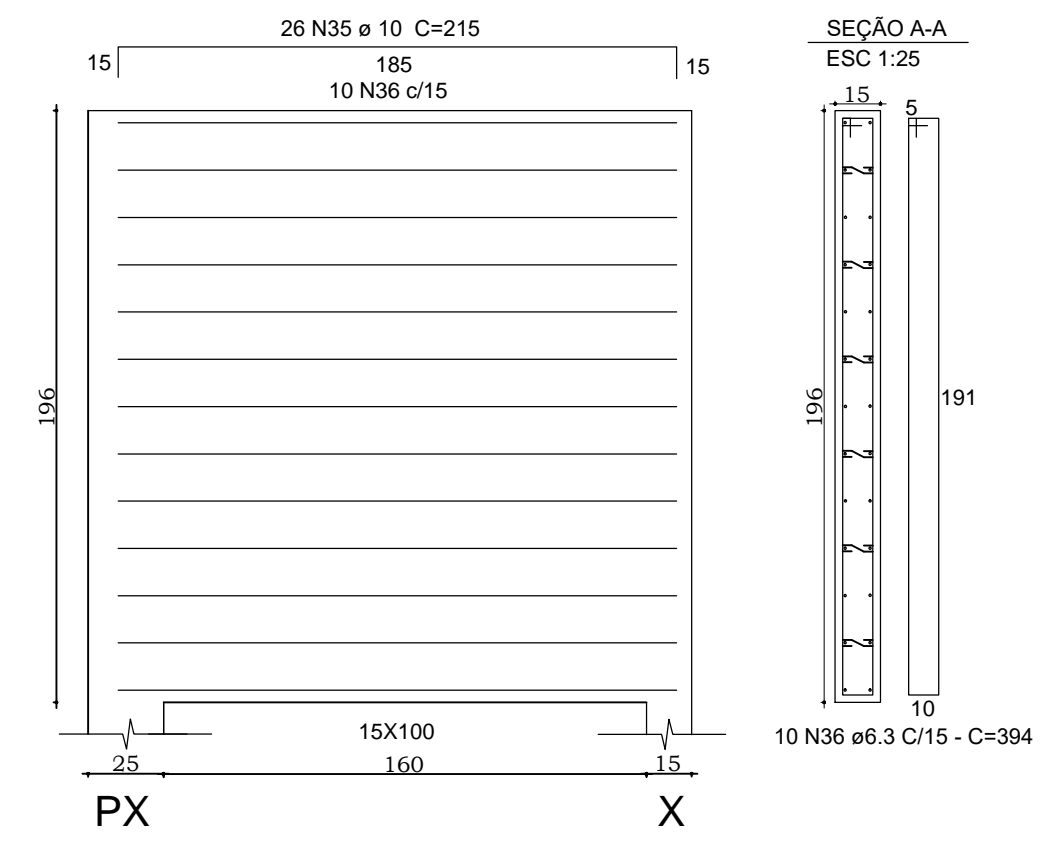
VIGAS RAMPA
V02=V05
ESC 1:25



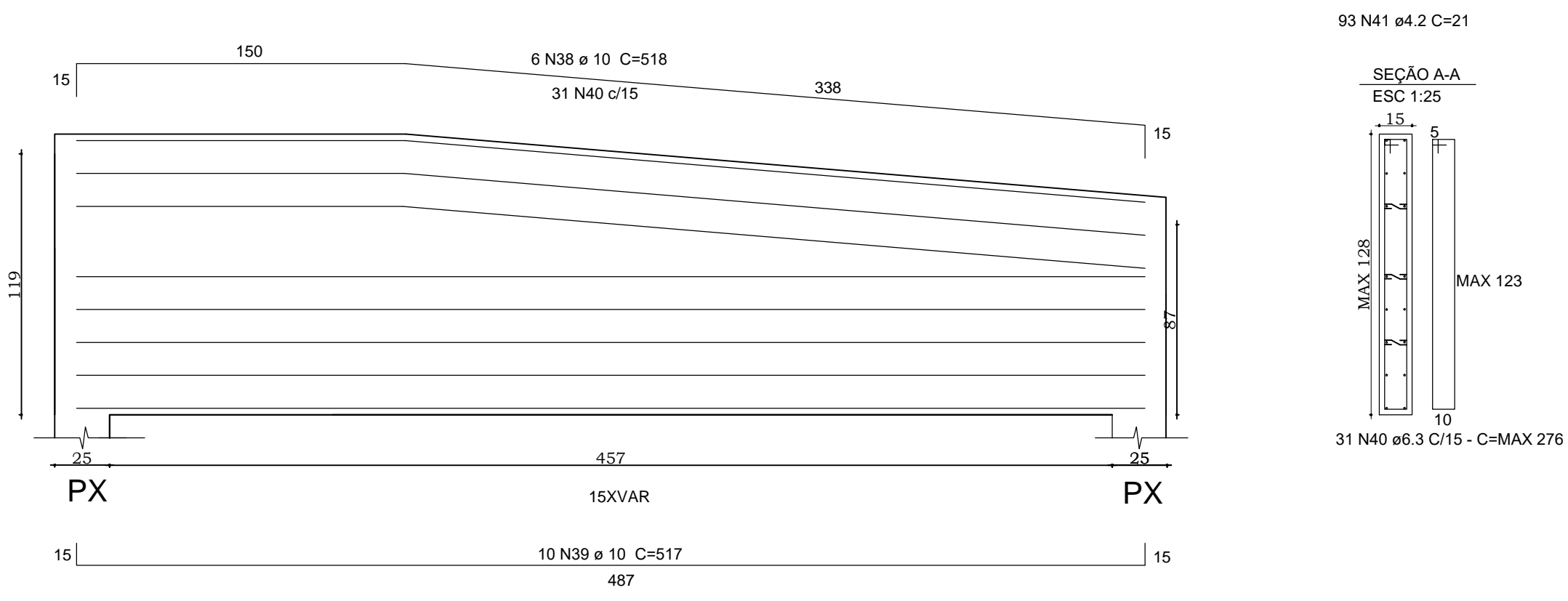
VIGAS RAMPA
V03=V06
ESC 1:25



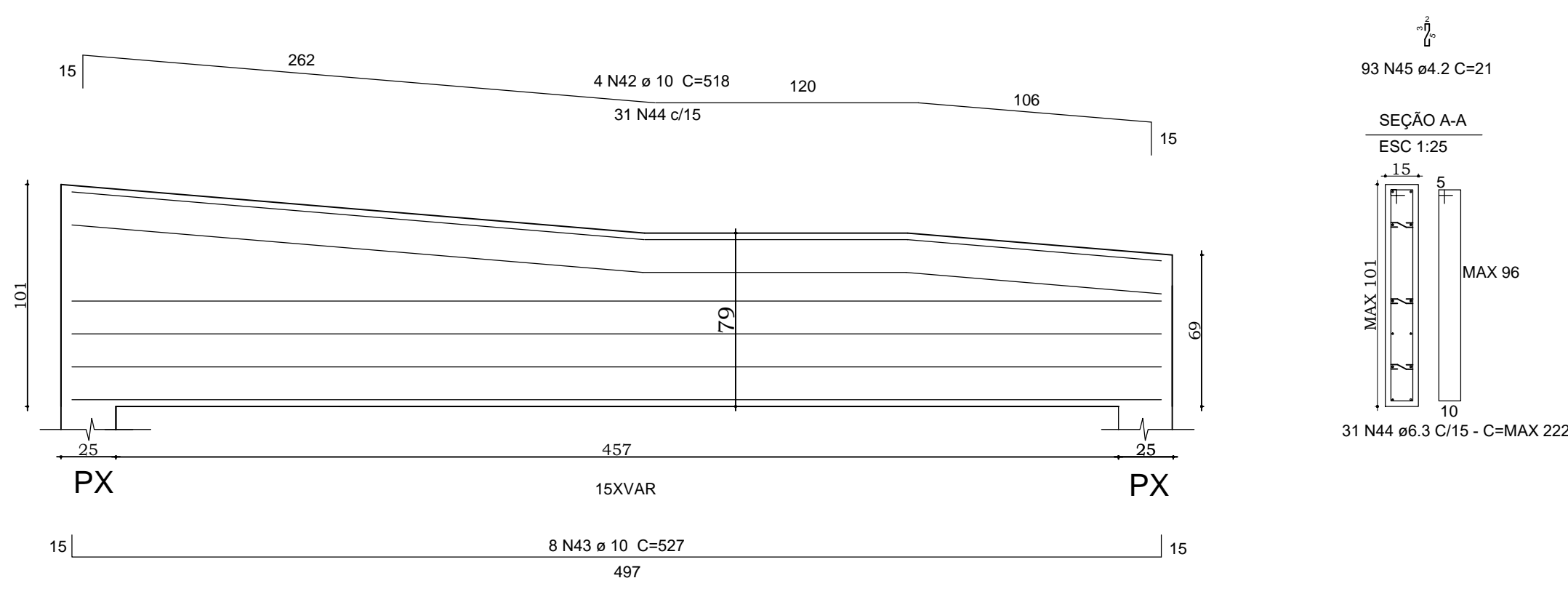
VIGAS RAMPA
V07
ESC 1:25



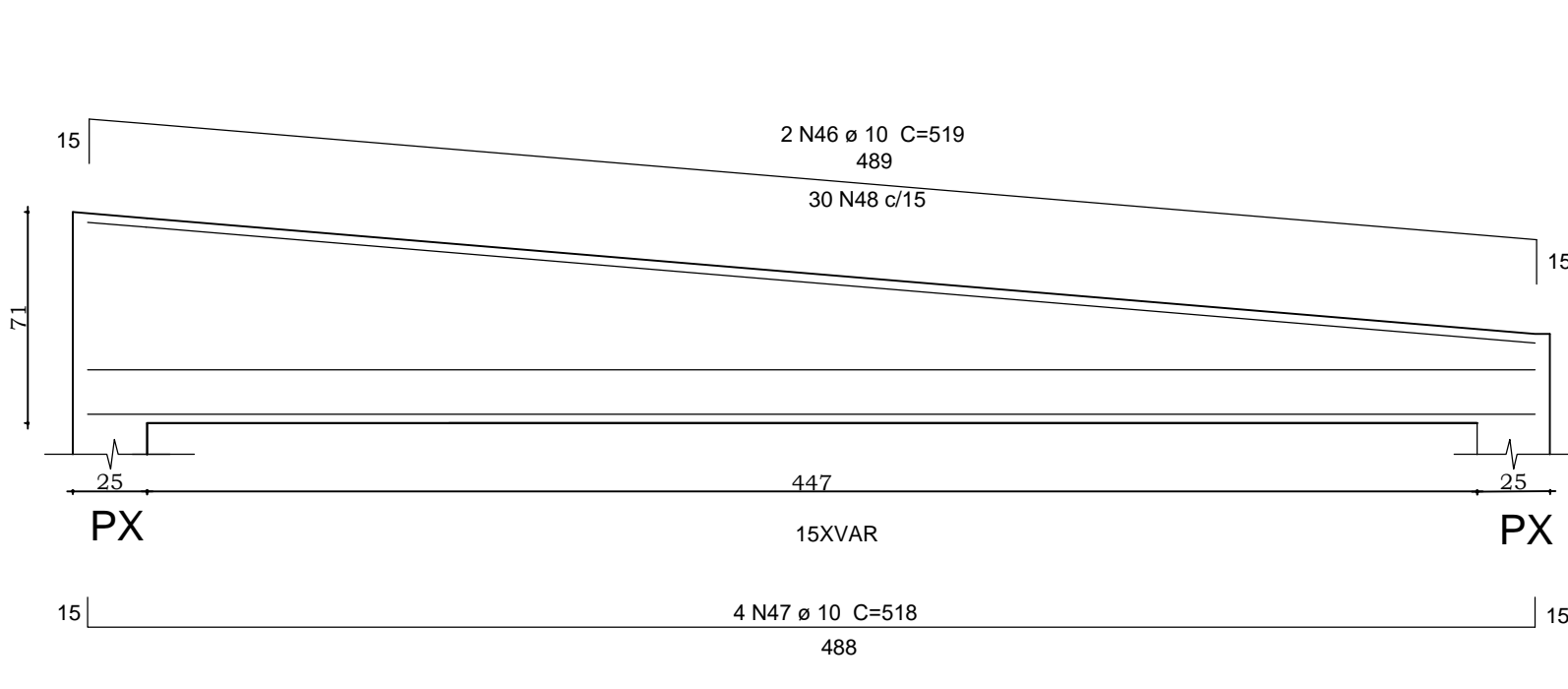
VIGAS RAMPA
V08
ESC 1:25



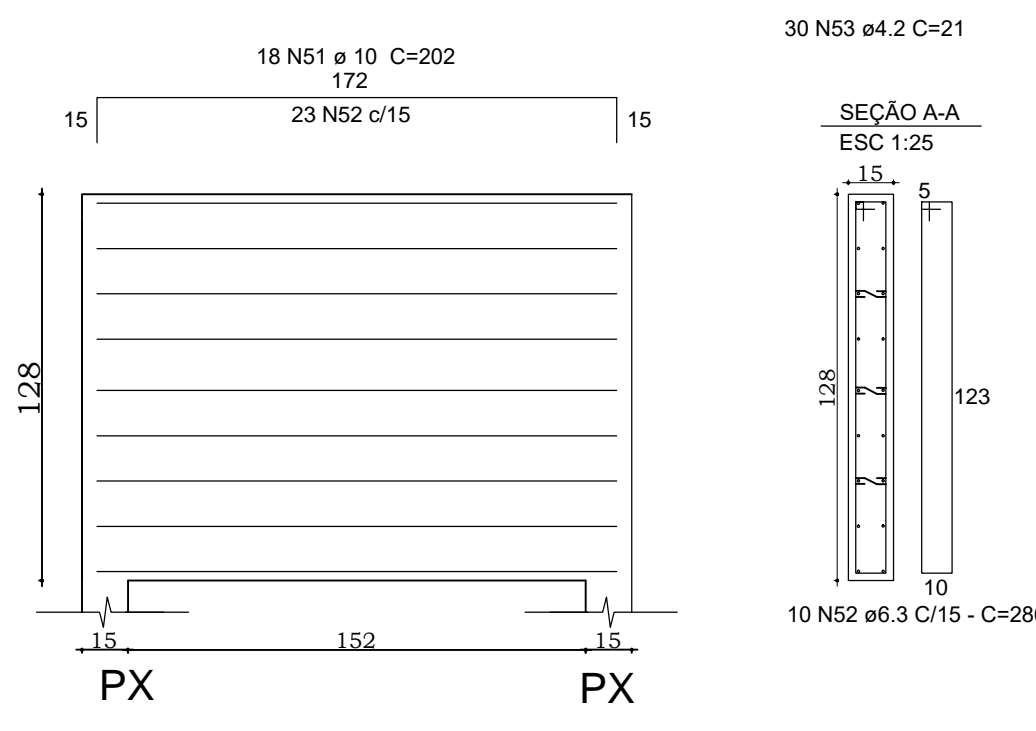
VIGAS RAMPA
V09
ESC 1:25



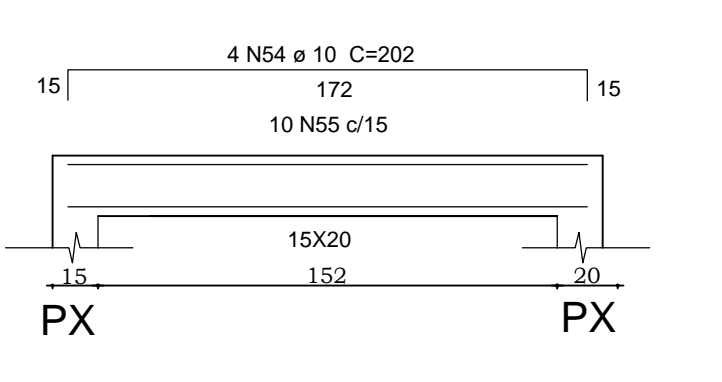
VIGAS RAMPA
V10
ESC 1:25



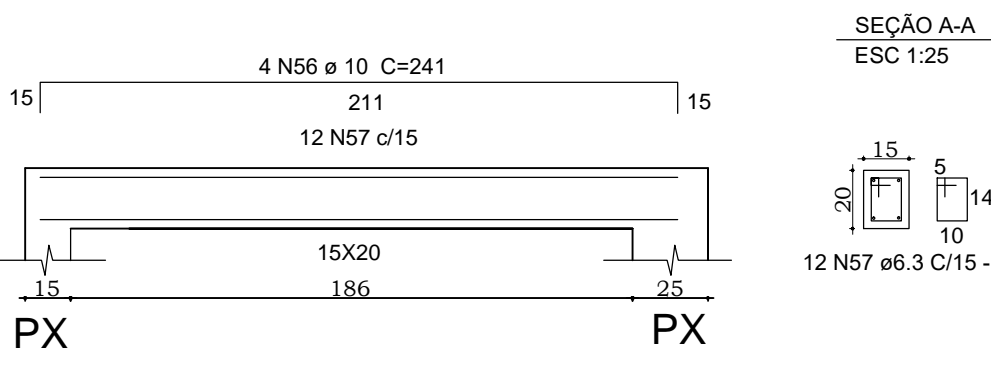
VIGAS RAMPA
V11=V16
ESC 1:25



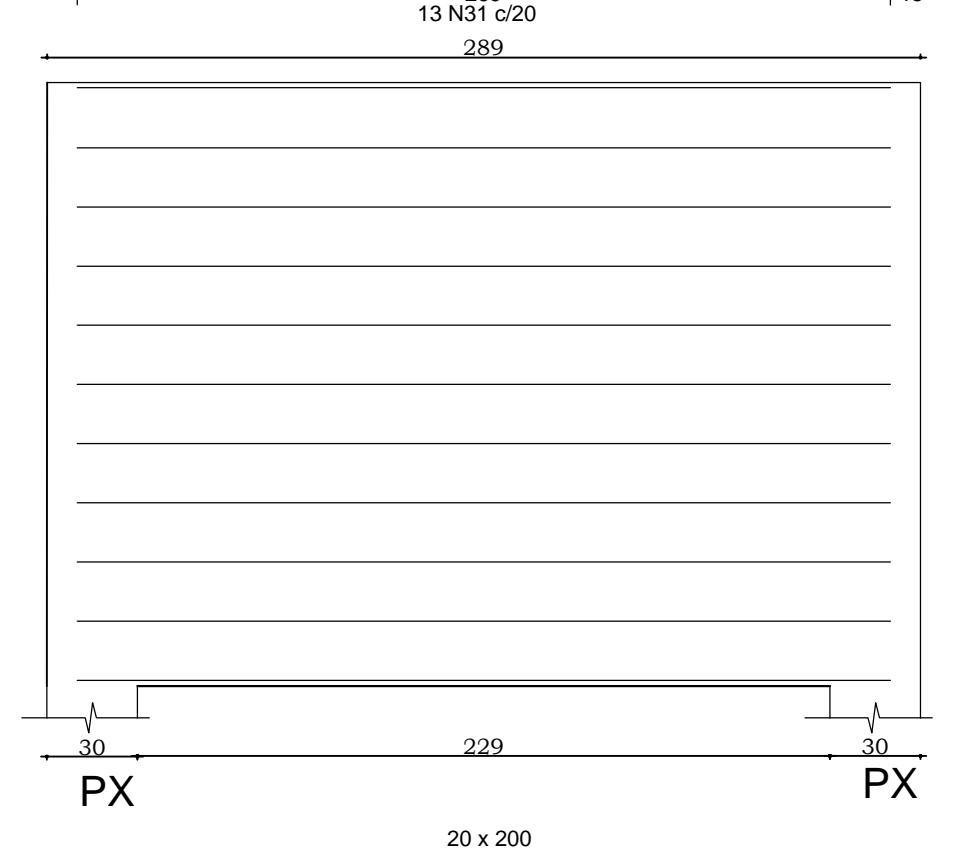
VIGAS RAMPA
V12=V13=V17=V18=V19
ESC 1:25



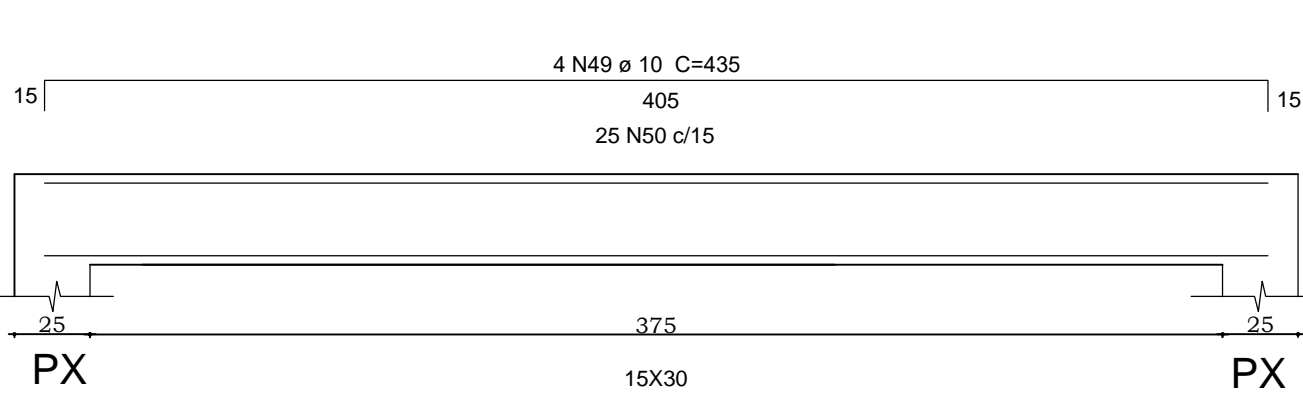
VIGAS RAMPA
V14
ESC 1:25



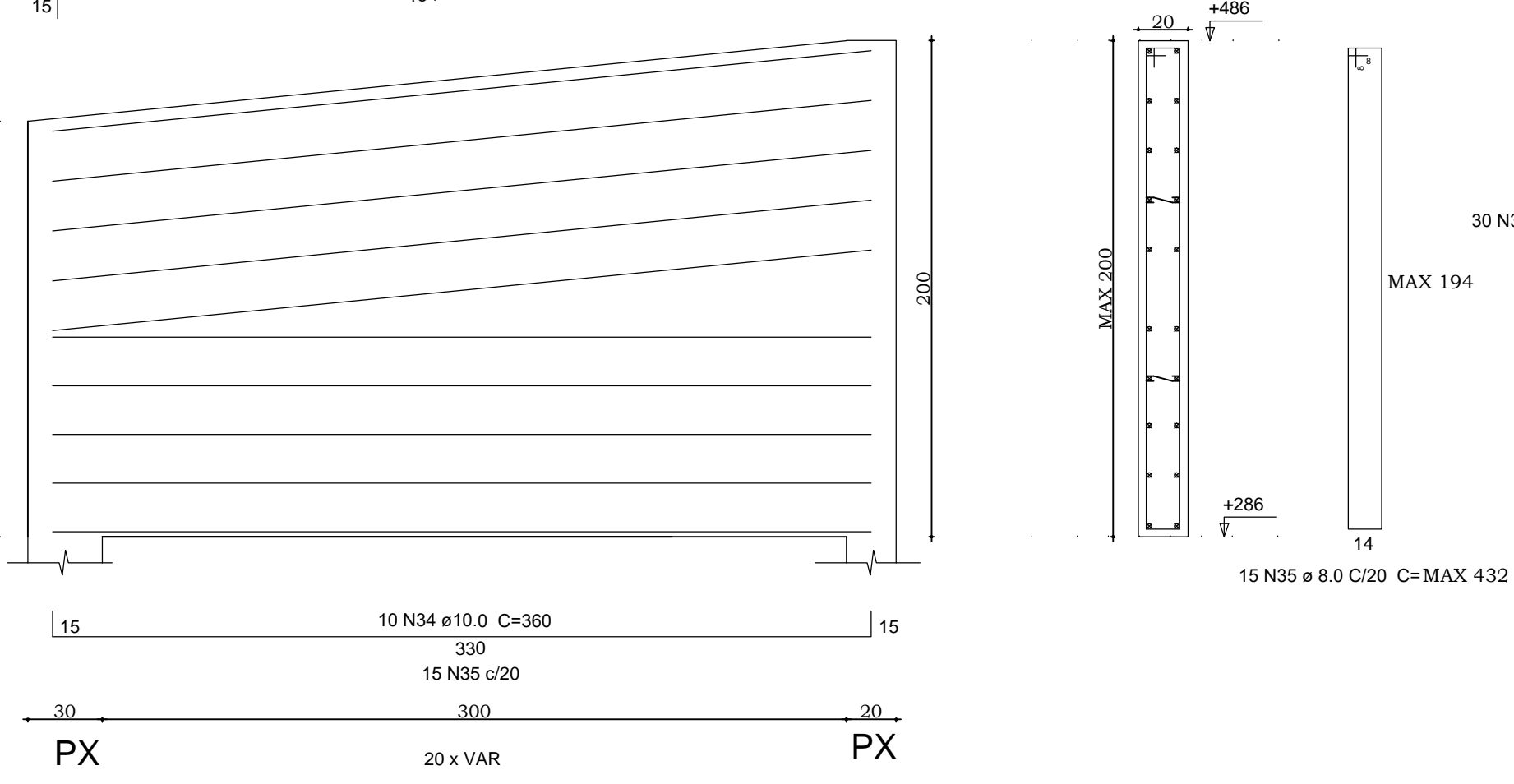
VIGA V15=V20
ESC 1:25



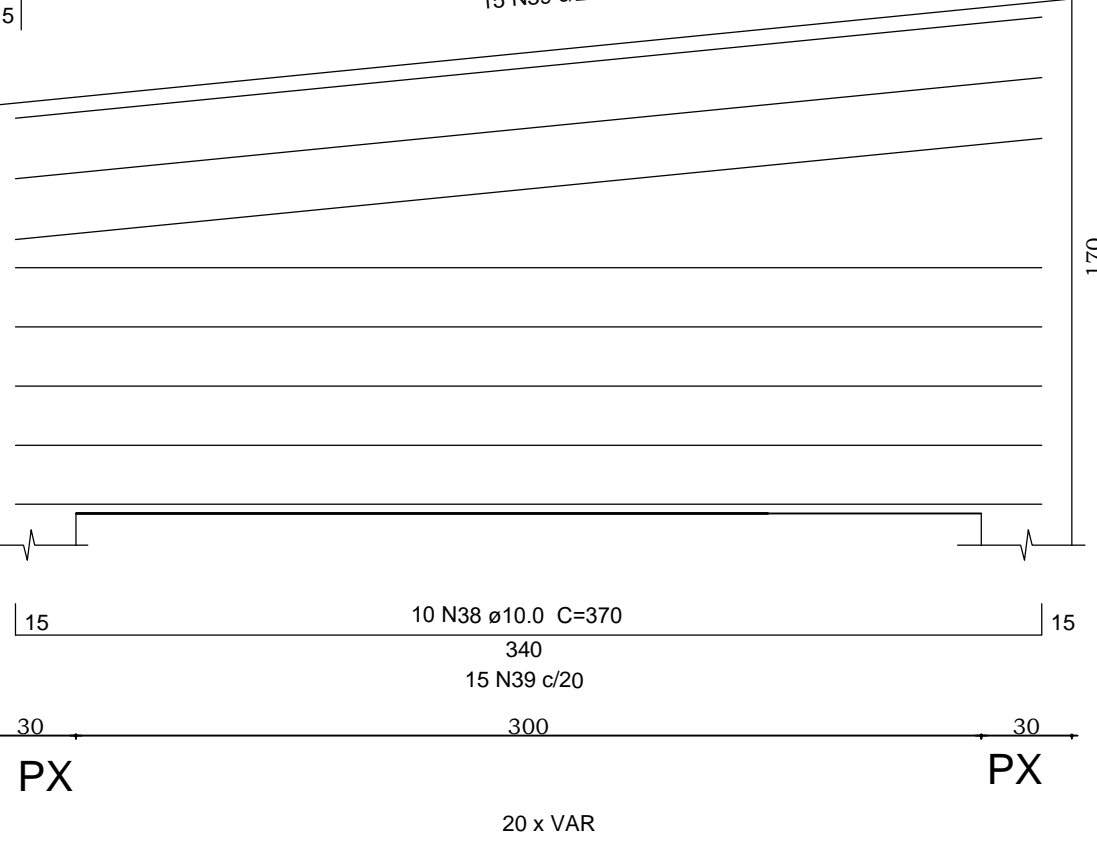
VIGAS RAMPA
V21=V24=V26=V28=V30
ESC 1:25



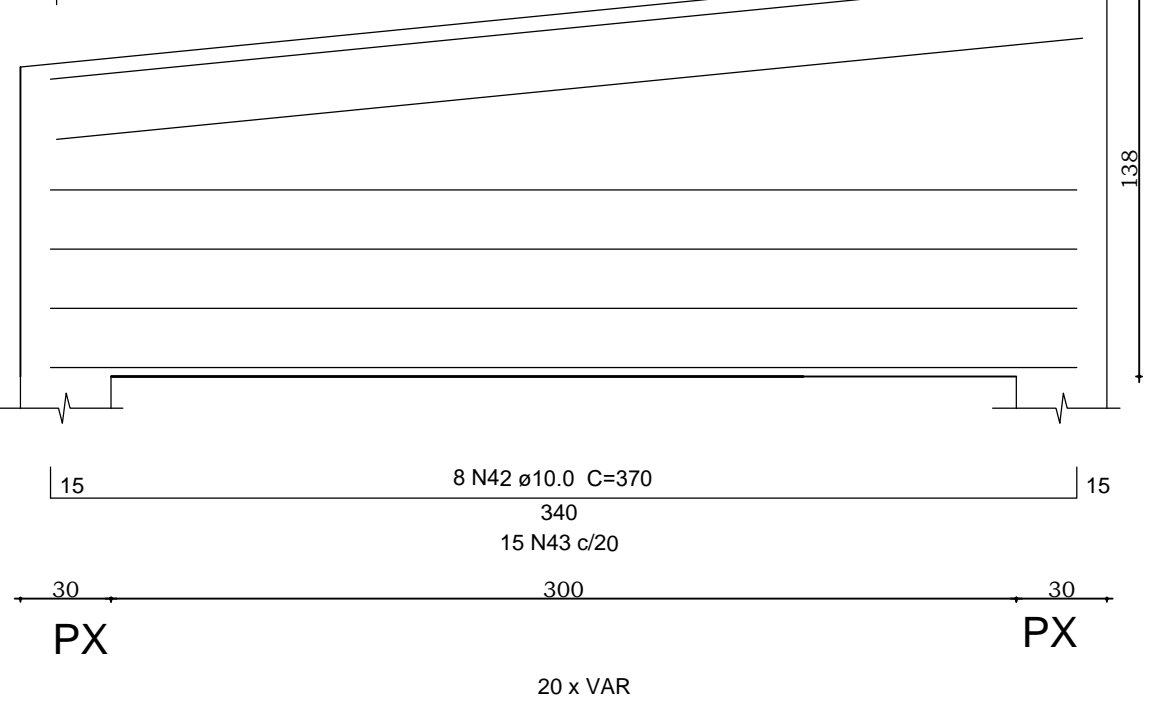
VIGA V22
ESC 1:25



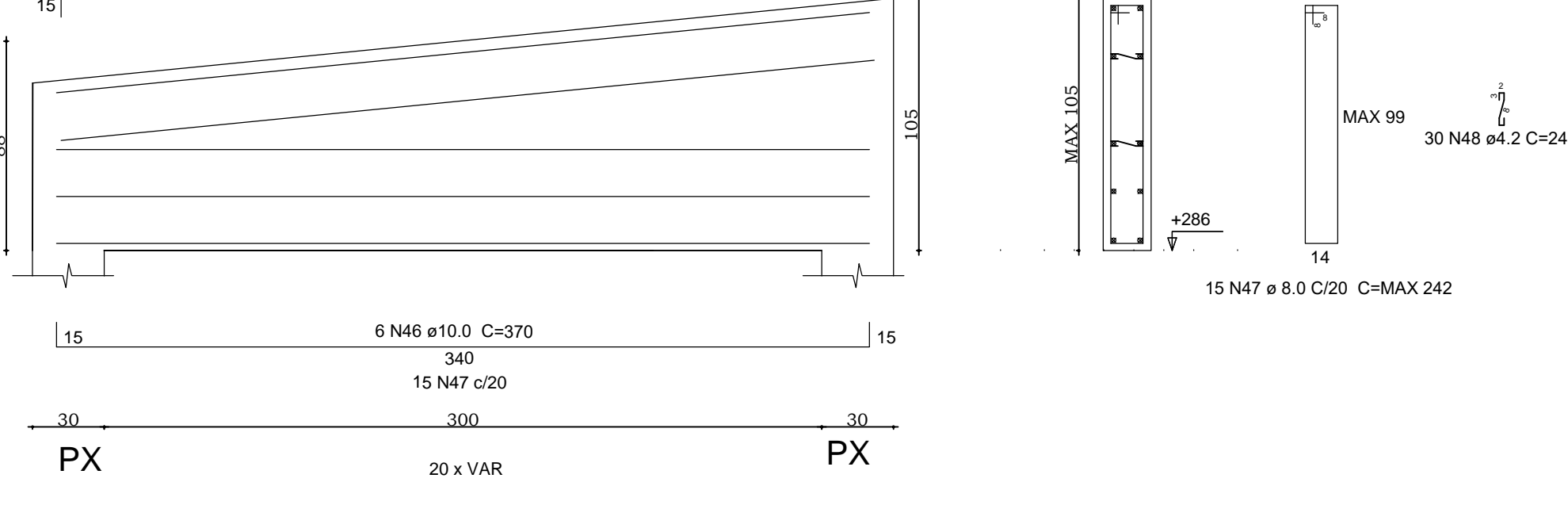
VIGA V23
ESC 1:25



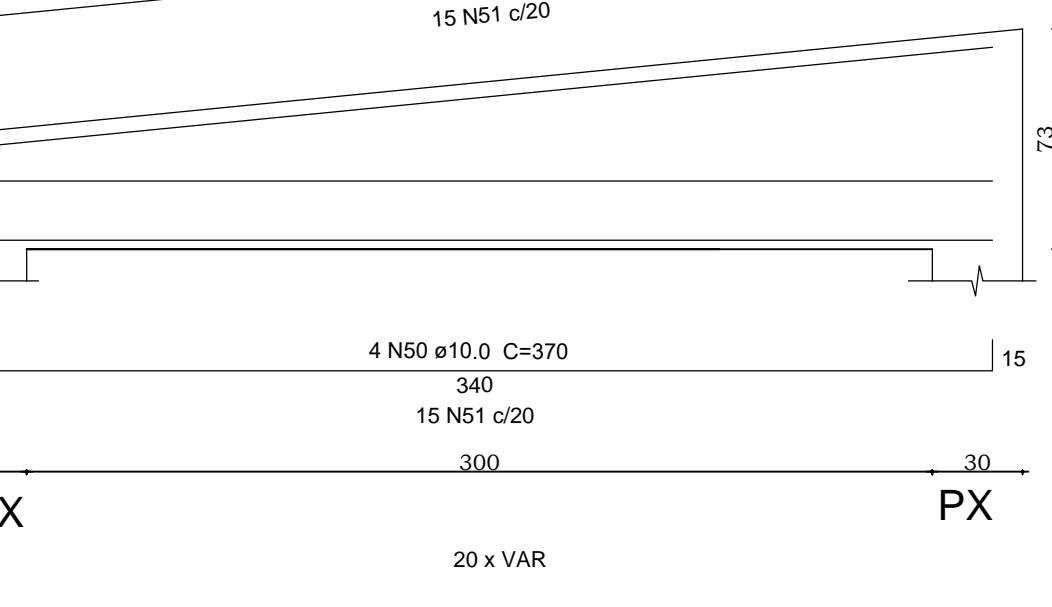
VIGA V25
ESC 1:25



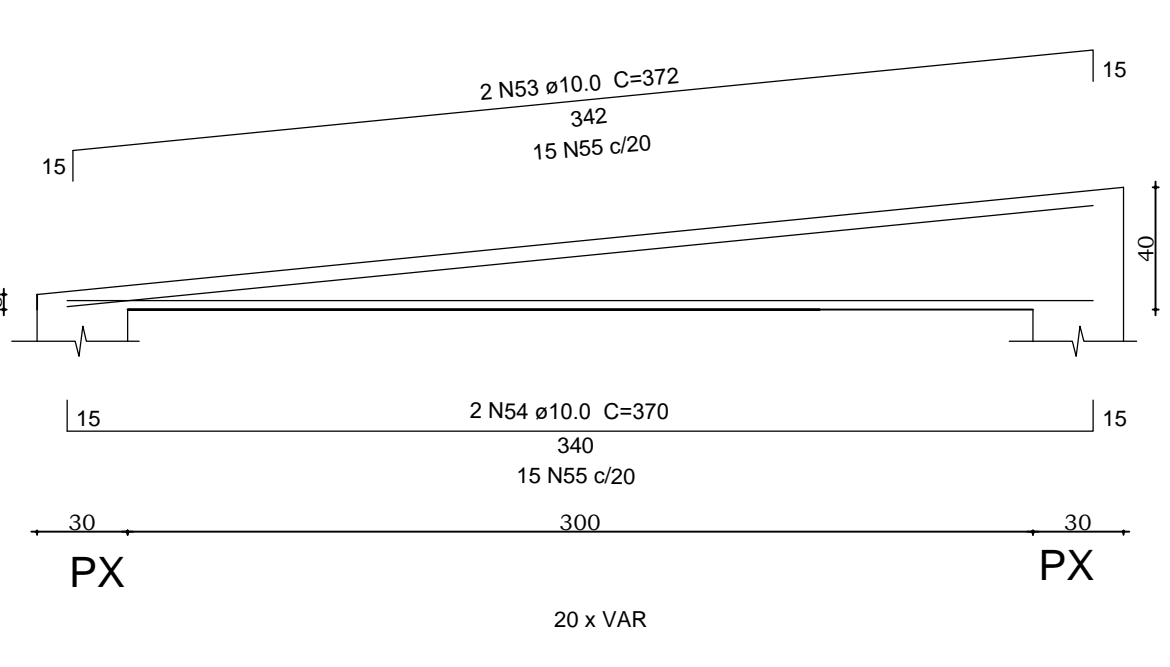
VIGA V27
ESC 1:25



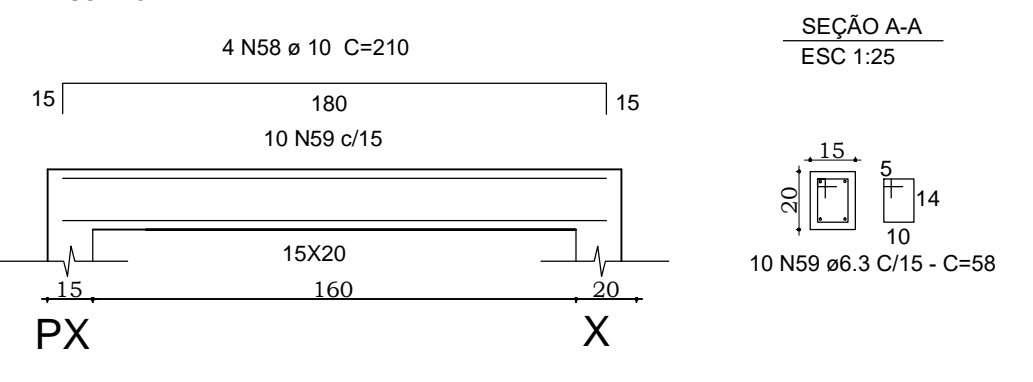
VIGA V29
ESC 1:25



VIGA V31
ESC 1:25



VIGAS RAMPA
V32=V33=V34
ESC 1:25



PROJETO		PRACA DA PREFEITURA	
ENDEREÇO DA OBRA: Avenida XV de Agosto, 342, Centro - Prefeitura Municipal - Ipirá - Ipirá - SC	ESCALA: Indicada	FRONTO: EST	DATA: 05/07
DISCRIMINAÇÃO: PROJETO ESTRUTURAL DETALHAMENTO MURO 02 E RAMPA	DESENHO: SAMANTHA	PROPRIETÁRIO:	RESP. EXECUÇÃO:
RESP. PROJETO:	RESP. EXECUÇÃO:	PROPRIETÁRIO:	RESP. EXECUÇÃO: